

# Limetree Cleaning Solutions

03337720663

contact@limetreecleans.co.uk |

www.limetree.uk.com



RECIPIENT NAME & ADDRESS:

Job No.

Scheduled

Date

## Reception Area - weekly

- remove cobwebs from ceiling, corners & above door frames ☒
- clean & polish internal windows ☒
- dust & clean wall accessories (sockets, switches, notice boards etc) ☒
- disinfect all flat surfaces, including window ledges ☒
- clean lift internally & external door ☒
- hoover and mop, place Wet Floor sign in the area ☒

## Stairwells and Corridors - weekly

- dust & clean wall accessories (sockets, switches, notice boards etc) ☒
- dust & polish doors including window, frames and handles ☒
- disinfect handrails ☒
- disinfect all flat surfaces, including window ledges ☒
- spot clean windows & glass, skirting, stair nosing & railings if not on rotation ☒
- hoover including stairs (each step) ☒
- spray deodoriser ☒
- clean lift doors ☒

## External Area - weekly

- remove cobwebs from front entrance, including lighting area ☒
- clean entrance intercom, including lighting ☒
- litter pick around the grounds (external fire exit stairwell, x 2 car parks and front entrance) ☒

## Limetree Cleaning Solutions

03337720663

contact@limetreecleans.co.uk |

www.limetree.uk.com



remove any free newspapers/leaflets

☐

### On Rotation / Additional

clean & polish all windows internal only (wk 1)

☐

remove cobwebs from ceiling, corners & above door frames in stairwells (wk 1)

☐

clean entrance windows externally (wk 2)

☒

dust & clean ceiling and wall lighting, including other ceiling accessories (wk 2)

☒

dust and clean stair railings (wk 3)

☐

clean stair nosings and surrounding area (wk 3)

☐

hoover & clean hallway skirtings, including stair skirtings (wk 4)

☐

remove cobwebs from ceiling, corners & above door frames in corridors (wk 4)

☐

### Comments / Feedback

reported defects

any other comments

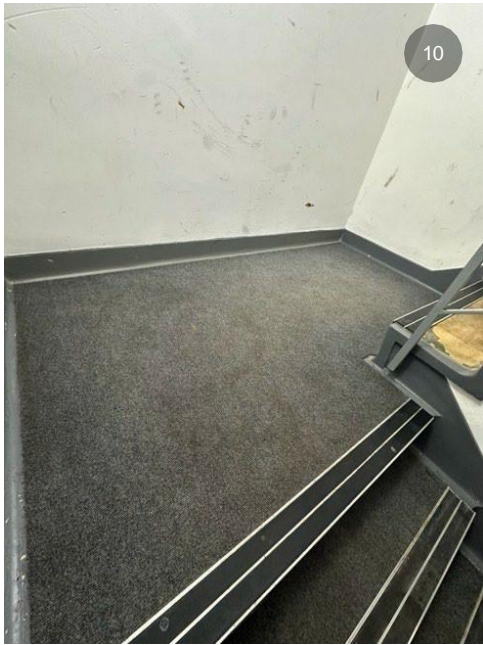
# Limetree

Before v After Photos



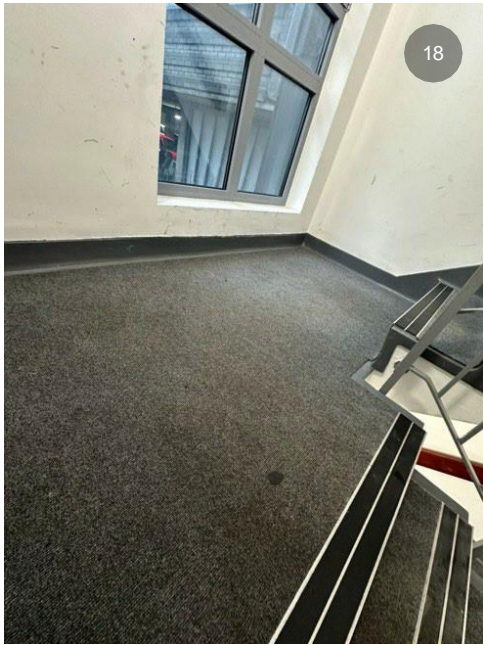
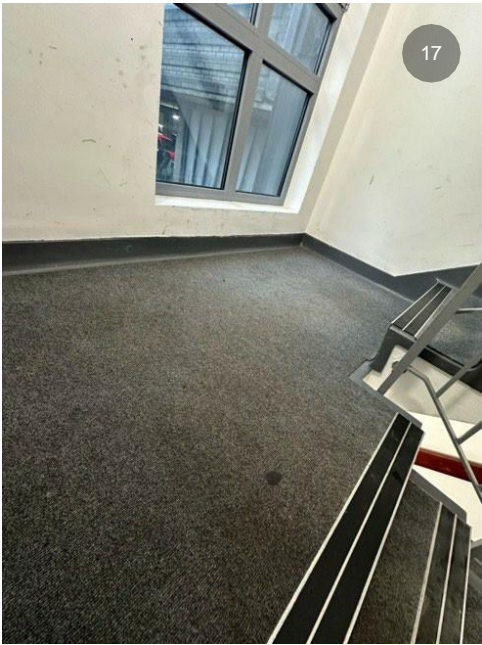


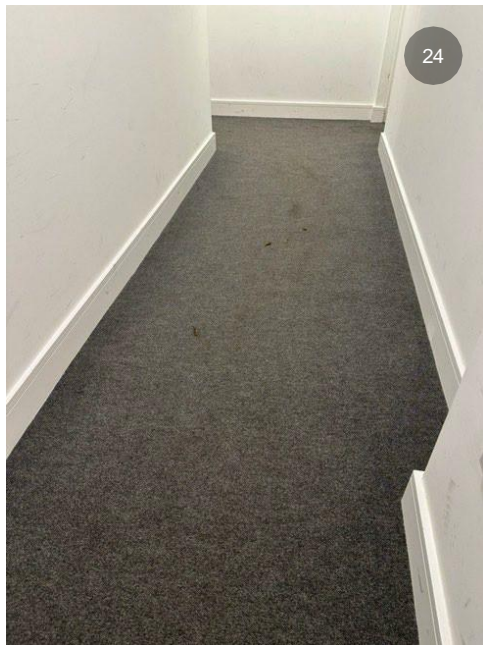




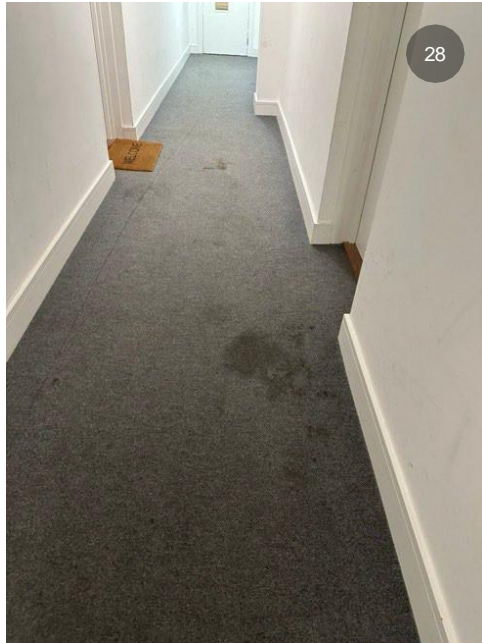
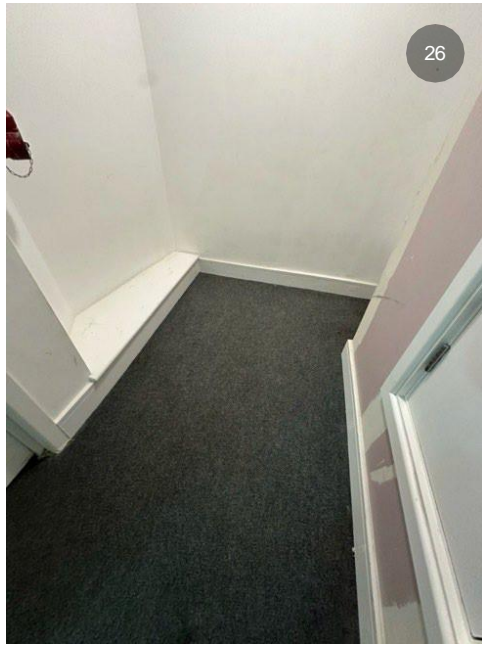






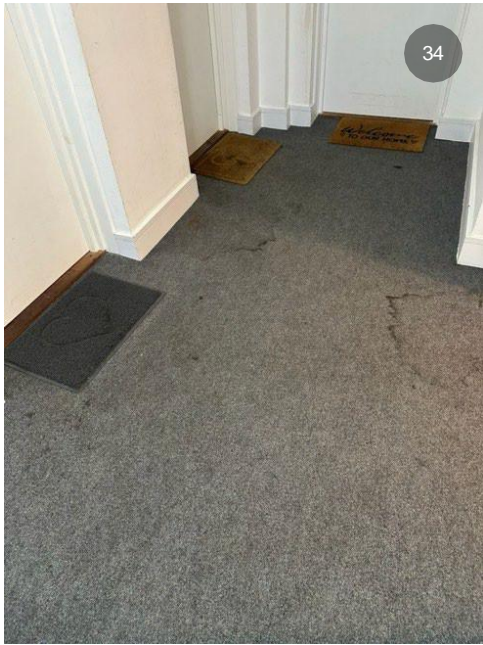








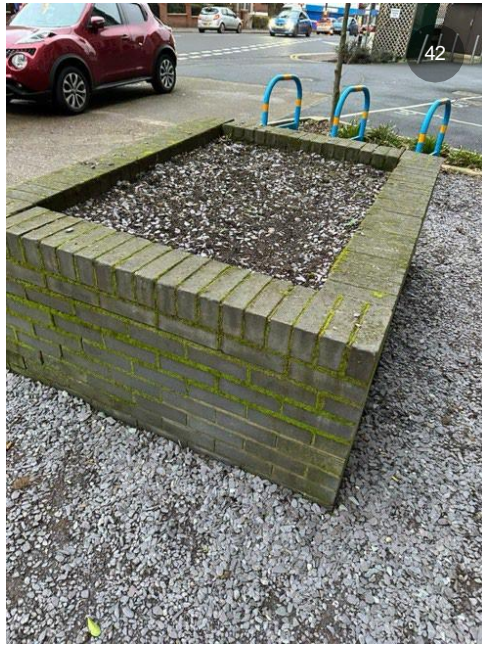




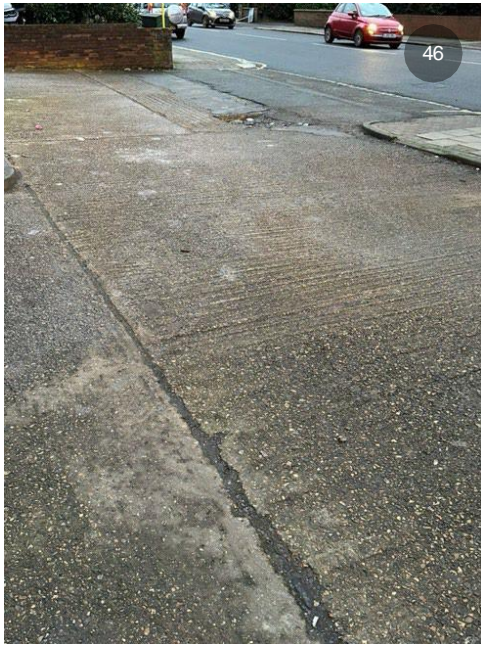




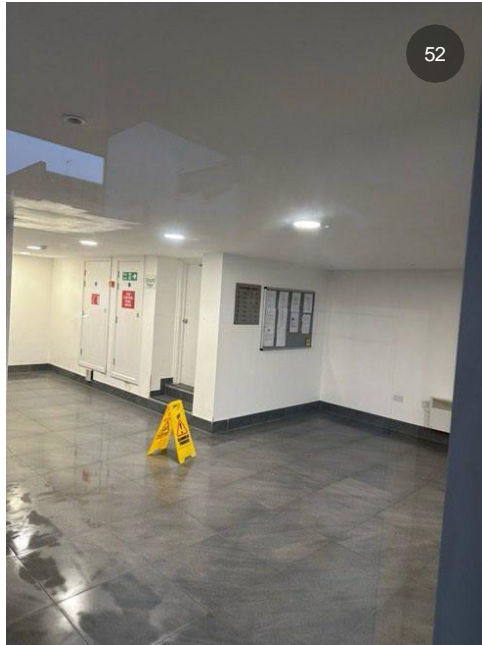
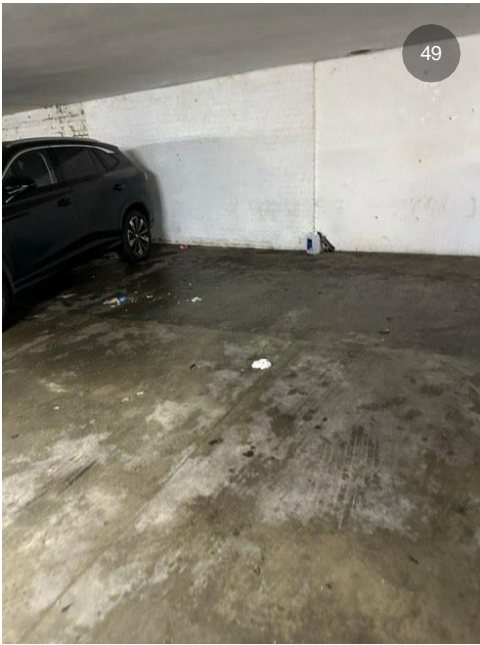












## Defect Report

Removed waste from floor and cleaned the area

Plug isn't working on floor 2, struggling to reach the end of the corridor.

